

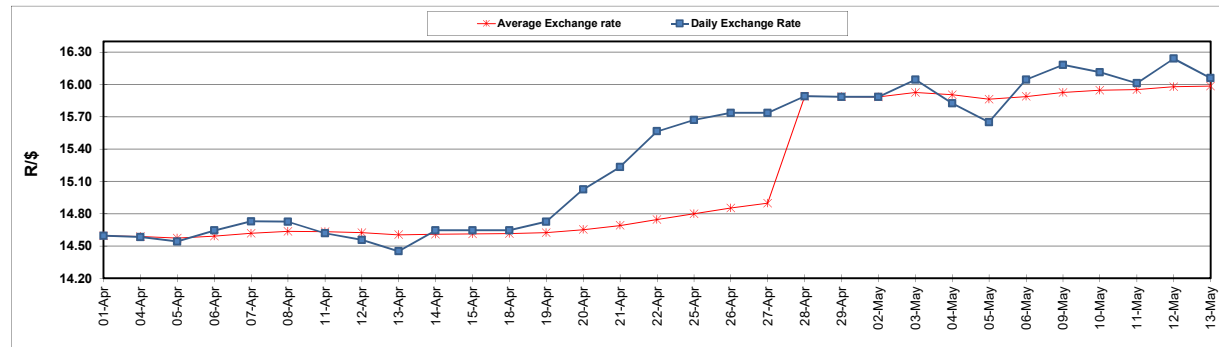
	PETROL 95 ULP	PETROL 93 ULP & LRP	DIESEL 0.05%	DIESEL 0.005%	ILL. PAR.
GAUTENG PUMP PRICE (SA c/l) AS FROM 04/05/2022	2,184.000	2,151.000	-	-	-
WHOLESALE PRICE (SA c/l) AS FROM 04/05/2022	-	-	2,199.440	2,215.840	1,664.288
SINGLE NATIONAL MAXIMUM RETAIL PRICE	-	-	-	-	2,194.000
BASIC FUEL PRICE - 13/05/2022 (SA c/l)	1,554.950	1,527.904	1,607.726	1,621.039	1,582.646
PRESS RELEASE CONTRIBUTION TO BFP 04/05/2022 - 13/05/2022 (SA c/l)	1,264.410	1,241.410	1,497.630	1,514.030	1,446.128
UNIT OVER/(UNDER) RECOVERY - 13/05/2022 (SA c/l)	(290.540)	(286.494)	(110.096)	(107.009)	(136.518)
AVERAGE BASIC FUEL PRICE 28/04/2022 - 13/05/2022	1,466.697	1,439.299	1,628.634	1,644.733	1,633.133
AVERAGE UNIT OVER/(UNDER) RECOVERY 28/04/2022 - 13/05/2022	(197.520)	(193.122)	(162.671)	(160.369)	(214.672)

ANALYSIS MOVEMENT OF AVERAGE OVER/(UNDER) RECOVERY

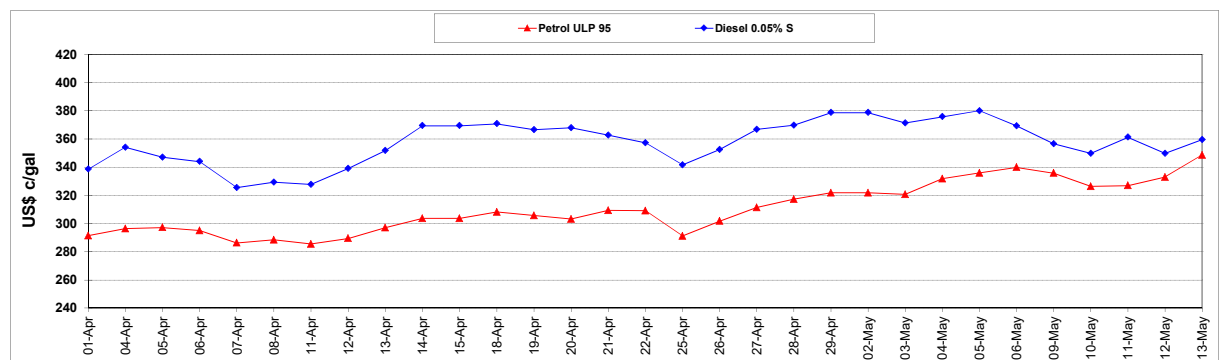
	PETROL 95	PETROL 93	DIESEL 0.05%	DIESEL 0.005%	ILL. PAR.
- MOVEMENT IN INTERNATIONAL PRODUCT PRICES	(97.827)	(95.292)	(51.971)	(48.576)	(103.667)
- MOVEMENT IN EXCHANGE RATE	(99.693)	(97.830)	(110.700)	(111.794)	(111.005)
AVERAGE UNIT OVER/(UNDER) RECOVERY 28/04/2022 - 13/05/2022	(197.520)	(193.122)	(162.671)	(160.369)	(214.672)

R/\$ EXCHANGE RATE - (R/\$16.0590 - 13/05/2022)

EXCHANGE RATE USED IN BASIC FUEL PRICE



INTERNATIONAL PRODUCT PRICES OF BASKET USED IN BASIC FUEL PRICE



BASIC FUEL PRICE IN SA CENTS PER LITRE

